
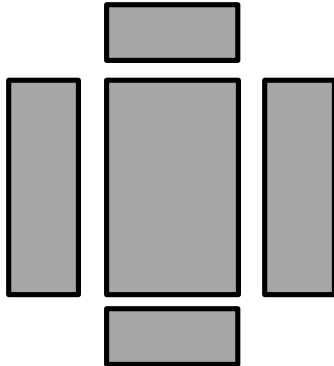
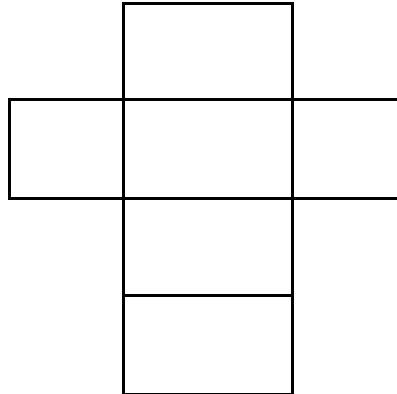


| | | | | | |
|---|---|--|-------|--|------|
|  | NAME: Answers | | | | |
| | Gr 7 | | Date: | | Time |
| CAPS Reference | 4-2 Surface Area and Volume of 3D objects | | | | |
| Topic | 4-2-2 Surface Area –Rectangular Prisms and Cubes | | | | |

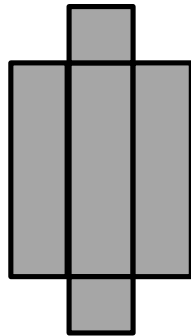
2.1



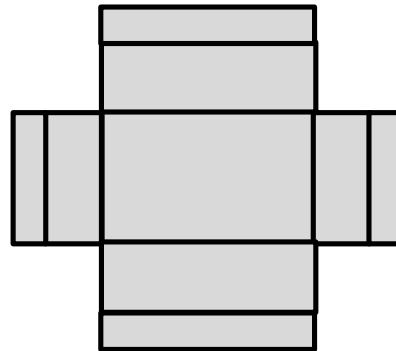
2.2



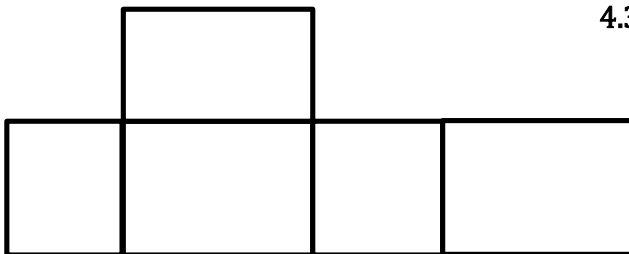
2.3



2.4

4.1.1 470 cm²4.1.2 2592 cm²4.1.3 4960 mm²4.2.1 51.88 m²4.2.2 727,5 m²

4.3.1



4.3.2 Class to evaluate answers

8.1.1 2400 cm²8.1.2 6144 mm²8.1.3 0,96 m²8.2.1 13,5 m²8.2.2 0,375 m²8.2.3 24 m²8.3.1 4680 cm²8.3.2 384 mm²8.3.3 88 800 mm²